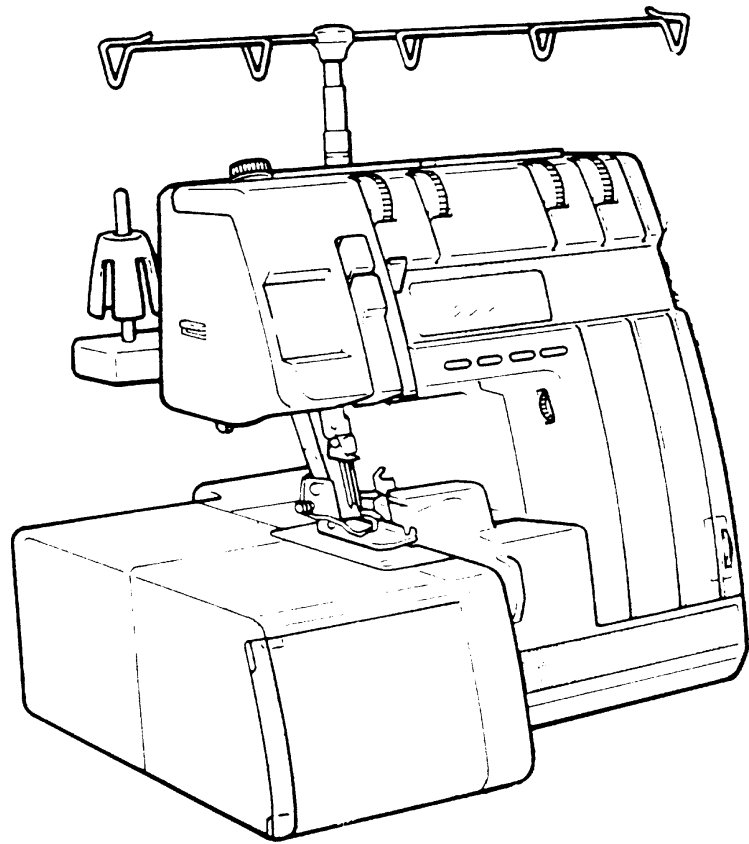
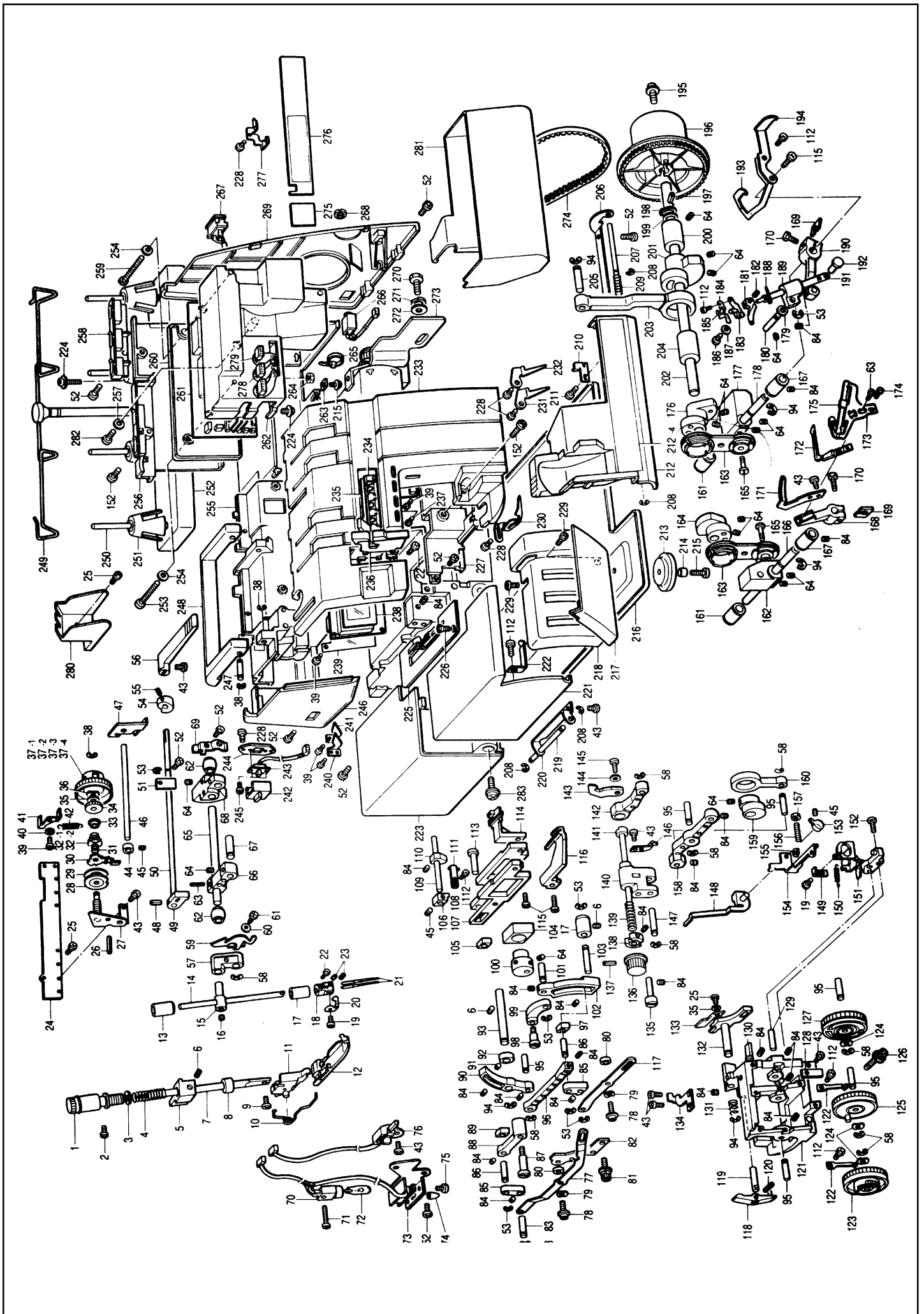


Spare Parts



Husqvarna Huskylock 660 CD

Pos	Part no	Description	Pos	Part no	Description
1	415 45 68-01	PRESSURE ADJUSTMENT DIAL	83	415 46 22-01	ADJUSTING LINK SHAFT
2	415 45 69-01	SCREW	84	415 32 14-01	SCREW
3	415 45 70-01	WASHER	85	415 46 23-01	ADJUSTING LINK
4	415 45 71-01	PRESSER ADJUSTMENT SPRING	86	415 46 24-01	ADJUSTING BLOCK SHAFT
5	415 41 57-01	PRESSER BAR BRACKET	87	415 46 25-01	DIFFERENTIAL LINK SHAFT
6	415 41 58-01	SCREW	88	415 46 26-01	DIFFERENTIAL ADJUSTING LINK
7	415 41 56-01	PRESSER BAR	89	415 46 27-01	DIFFERENTIAL FEED ADJUST. BLOCK
8	415 41 59-01	Presser bar FELT	90	415 46 28-01	FEED BAR LEVER
9	415 30 34-01	SCREW	91	415 31 50-01	ScREW
10	415 45 72-01	PRESSER FOOT SPRING	92	415 41 31-01	Stop ring
11	415 45 73-01	PRESSER FOOT HOLDER ASSEMBLY	93	415 46 29-01	FEED BAR LEVER SHAFT
12	415 45 74-01	PRESSER FOOT ASSEMBLY	94	415 32 59-01	STOP RING
13	415 31 81-01	NEEDLE BAR BUSHING	95	415 46 30-01	FEED BAR LINK SHAFT
14	415 45 75-01	NEEDLE BAR	96	415 46 31-01	FEED BAR LINK
15	415 31 80-01	NEEDLE BAR connecting STUD	97	415 46 32-01	FEED ADJUSTING BLOCK
16	415 45 76-01	SCREW	98	415 46 33-01	FEED ECCENTRIC WHEEL SHAFT
17	415 45 77-01	NEEDLE BAR BUSHING, LOWER	99	415 46 34-01	FEED LINK
18	415 45 78-01	NEEDLE CLAMP	100	415 46 35-01	FEED ECCENTRIC WHEEL
19	415 45 79-01	SCREW	101	415 46 36-01	FEED LINK SHAFT
20	415 45 80-01	NEEDLE BAR THREAD GUIDE	102	415 46 37-01	FEED ADJUSTING LEVER
21	401 60 92-01	Needles 5xNM80	103	415 46 38-01	FEED ADJUSTING LEVER SHAFT
22	415 42 69-01	SCREW	104	415 46 39-01	VERTICAL FEED BLOCK
23	415 45 81-01	SCREW	105	415 46 40-01	DIFFERENTIAL FEED BAR BLOCK
24	415 45 82-01	THREAD TENSION BRACKET	106	415 46 43-01	FEED BAR GUIDE, LEFT
25	415 30 99-01	SCREW	107	415 46 41-01	DIFFERENTIAL FEED BAR
26	415 45 83-01	SPRING PIN	108	415 46 42-01	MAIN FEED BAR
27	415 45 84-01	THREAD TENSION BASE ASSEMBLY	109	415 46 44-01	FEED BAR GUIDE SHAFT
28	415 45 85-01	THREAD TENSION DISC A	110	415 46 45-01	NEEDLE PLATE SUPPORTING COLLAR
29	415 43 52-01	TENSION DISC	111	415 46 46-01	FEED BAR GUIDE, RIGHT
30	415 45 86-01	THREAD TENSION RELEASER	112	415 34 73-01	SCREW
31	415 45 87-01	THREAD TENSION SPRING SL	113	415 46 47-01	FEED BAR SHAFT
32.1	415 45 88-01	THREAD TENSION SPRING	114	415 46 48-01	MAIN FEED DOG
32.2	415 45 89-01	THREAD TENSION SPRING	115	415 31 23-01	SCREW
33	415 45 90-01	THREAD TENSION SPRING WASHER	116	415 46 49-01	DIFFERENTIAL FEED DOG
34	415 45 91-01	THREAD TENSION NUT	117	415 46 50-01	FEED ADJUSTING LINK C
35	415 45 92-01	WASHER	118	415 46 51-01	LOWER BLADE MOVABLE LEVER
36	415 45 93-01	WAVE WASHER	119	415 42 38-01	LEVER HOLDER SHAFT
37.1	415 45 94-01	THREAD TENSION DIAL (YELLOW)	120	415 42 40-01	SPRING PIN
37.2	415 45 95-01	THREAD TENSION DIAL (RED)	121	415 46 52-01	NEEDLE PLATE BASE
37.3	415 45 96-01	THREAD TENSION DIAL (GREEN)	122	415 46 53-01	DIAL GUIDE SPRING
37.4	415 45 97-01	THREAD TENSION DIAL (BLUE)	123	415 46 54-01	DIFFERENTIAL FEED DIAL
38	415 33 97-01	STOP RING	124	415 46 55-01	WAVE WASHER
39	415 45 98-01	Tapping sCREW	125	415 46 56-01	FEED DIAL
40	415 45 99-01	WASHER	126	415 46 57-01	SCREW
41	415 46 00-01	DIAL CLUTCH	127	415 46 58-01	LOWER BLADE DIAL ASSEMBLY
42	415 46 01-01	CLUTCH SPRING	128	415 46 59-01	CONTROL FRONT COVER SPRING
43	415 41 49-01	SCREW	129	415 46 60-01	STUD SHAFT
44	415 46 02-01	THREAD TENSION RELEASE BLOCK	130	415 46 61-01	LOWER BLADE GUIDE SHAFT
45	728 52 17-05	Screw	131	415 42 42-01	LOWER BLADE SPRING
46	415 46 03-01	THREAD TENSION RELEASE SHAFT C	132	415 46 62-01	LOWER BLADE HOLDER
47	415 46 04-01	THREAD TENSION RELEASE PLATE	133	415 46 63-01	LOWER BLADE
48	415 46 05-01	SPRING PIN	134	415 46 64-01	FIXED NEEDLE GUARD
49	415 41 24-01	PRESSER LIFTer CAM	135	415 46 65-01	UPPER BLADE HOLDER GUIDE SHAFT
50	415 46 06-01	PRESSER LIFTER SHAFT	136	415 46 66-01	UPPER BLADE KNOB
51	415 41 26-01	SHAFT PRESSER	137	415 46 67-01	SPRING PIN
52	415 45 09-01	SCREW	138	415 46 68-01	UPPER BLADE HOLDER GUIDE
53	415 32 64-01	STOP RING	139	415 46 69-01	UPPER BLADE PRESSER SPRING
54	415 46 07-01	TENSION RELEASE CAM	140	415 46 70-01	UPPER BLADE DRIVING PLATE
55	415 41 22-01	ScREW	141	415 46 71-01	UPPER BLADE HOLDER
56	415 46 08-01	PRESSER FOOT LEVER	142	415 46 72-01	UPPER BLADE ARM
57	415 31 79-01	NEEDLE BAR LINK	143	415 46 73-01	UPPER BLADE
58	415 31 87-01	STOP RING	144	415 33 05-01	WASHER
59	415 46 09-01	THREAd TAKE-UP	145	415 30 38-01	SCREW
60	415 30 98-01	SPRING WASHER	146	415 46 74-01	SAFETY MECHANISM
61	415 41 39-01	SCREW	147	415 46 75-01	UPPER BLADE DRIVING ARM SHAFT
62	415 41 30-01	CRANK SHAFT BUSHING	148	415 46 76-01	STITCH ASSEMBLY
63	415 46 10-01	SPRING PIN	149	415 46 77-01	STITCH PRESSER
64	415 32 03-01	SCREW	150	415 46 78-01	STITCH SPRING
65	415 46 11-01	NEEDLE BAR CRANK SHAFT	151	415 46 79-01	STITCH TONGUE HOLDER ASSEMBLY
66	415 46 12-01	NEEDLE BAR CRANK	152	415 45 04-01	SCREW
67	415 41 36-01	NEEDLE BAR LINK SHAFT A	153	415 46 80-01	STITCH CHANGING KNOB
68	415 46 13-01	NEEDLE BAR DRIVING LEVER	154	415 46 81-01	STITCH PLATE
69	415 41 34-01	Upper shaft BUSHING PRESSER	155	415 46 82-01	STOP RING
70	415 46 14-01	SEW-LIGHT ASSEMBLY	156	415 46 83-01	SCREW
71	415 46 15-01	SCREW	157	415 42 09-01	Nut
72	415 34 39-01	SEW-LIGHT bulb	158	415 46 84-01	UPPER BLADE DRIVING ARM
73	415 46 16-01	SEW-LIGHT PLATE	159	415 46 85-01	UPPER BLADE ECCENTRIC WHEEL
74	415 41 72-01	SEW-LIGHT SWITCH CAP	160	415 43 00-01	UPPER BLADE LINK
75	415 41 73-01	SCREW	161	415 32 56-01	LOOPER LEVER SHAFT BUSH.
76	415 47 64-01	SENSOR ASSEMBLY	162	415 46 86-01	UNDERLOOPER BALANCE
77	415 46 17-01	DIFFERENTIAL ADJUSTING LINK C	163	415 42 76-01	UL ROD ASSEMBLY
78	415 44 39-01	SCREW	164	415 46 87-01	UNDERLOOPER ROD ECCENTRIC WHEEL
79	415 45 12-01	Wave WASHER	165	415 44 27-01	LOOPER ROD STUD SHAFT
80	415 46 19-01	SPACER	166	415 46 88-01	UNDERLOOPER LEVER SHAFT
81	415 46 20-01	SET SCREW	167	415 42 81-01	LOOPER LEVER SHAFT BUSH., FRONT
82	415 46 21-01	MATERIAL PLATE COVER BRACKET	168	415 46 89-01	UNDERLOOPER LEVER
			169	415 42 88-01	Washer



Pos	Part no	Description			
			253	415 43 94-01	Screw
			254	415 43 95-01	Washer
170	415 46 90-01	LOOPER LEVER FIXING SCREW	256	415 47 38-01	REAR COVER ASSEMBLY
171	415 46 91-01	NEEDLE GUARD PLATE	257	415 43 91-01	INSULATION WASHER
172	415 46 92-01	UNDERLOOPER	258	415 47 39-01	THREAD RECTIFIER BODY ASSEMBLY
173	415 46 93-01	UNDERLOOPER THREAD GUIDE BASE	259	415 43 93-01	Screw
174	415 42 83-01	Screw	260	415 47 78-01	INSULATION COVER PLATE
175	415 46 94-01	UL THREAD GUIDE SLIDE ASSEMBLY	261	415 47 79-01	PC-BOARD
176	415 46 95-01	OVERLOOPER ROD ECCENTRIC WHEEL	262	415 47 80-01	INSULATION COVER
177	415 46 96-01	Overlooper balance	263	415 33 15-01	Nut
178	415 46 97-01	OVERLOOPER LEVER SHAFT			
179	415 45 16-01	Washer	264	415 43 89-01	Nut
			265	415 43 78-01	Band
180	415 32 63-01	OL GUIDE SHAFT	266	415 47 81-01	JACK ASSEMBLY
181	415 48 34-01	OVER LOOPER	266	415 47 82-01	JACK ASSEMBLY (GERMANY)
182	415 46 98-01	SCREW	267	415 47 83-01	INLET SWITCH ASSEMBLY
183	415 46 99-01	LOOPER CHANGE BASE	268	415 43 80-01	Jack nut
184	415 47 00-01	LOOPER CHANGE SPRING	269	415 47 84-01	BELT COVER E
185	415 47 01-01	LOOPER CHANGE CAM	270	415 33 28-01	Screw
186	415 47 02-01	SCREW	271	415 43 83-01	Spring washer
187	415 47 03-01	WASHER	272	415 33 26-01	Washer
188	415 34 82-01	OVER LOOPER THREAD GUIDE			
189	415 47 04-01	OVERLOOPER SHAFT GUIDE	273	415 48 68-01	MOTOR (230 V)
			274	415 47 50-01	TIMING BELT
190	415 31 04-01	OVERLOOPER SHAFT LEVER	275	415 47 51-01	PANEL PLATE SHEET, LEFT
191	415 47 05-01	OVERLOOPER SHAFT	276	415 47 89-01	LCD SHEET
192	415 30 56-01	OVERLOOPER lower SHAFT	277	415 47 53-01	NEEDLE THREAD GUIDE H
193	415 47 06-01	LOOPER THREAD TAKE-UP LEVER	278	415 47 90-01	LEAD WIRE ASSEMBLY #1
194	415 47 07-01	UL THREAD TAKE-UP LEVER	279	415 47 91-01	LEAD WIRE ASSEMBLY #2
195	415 47 08-01	SCREW	280	415 47 92-01	CORD COVER
196	415 43 09-01	HANDWHEEL	281	415 47 49-01	DUST BOX
197	415 43 08-01	SPRING PIN	282	415 41 67-01	Screw
198	415 32 72-01	STOP RING			
199	415 32 71-01	Washer	283	415 47 54-01	SCREW
				415 34 44-01	Foot control
200	415 32 70-01	DRIVING SHAFT BUSHING, right		415 48 66-01	Power cord Europe
201	415 47 09-01	NEEDLE BAR ECCENTRIC WHEEL		415 48 67-01	Power cord U.K.
202	415 47 10-01	DRIVING SHAFT			
203	415 43 02-01	NEEDLE BAR ROD			
204	415 43 01-01	DRIVING SHAFT BUSHING, LEFT			
205	415 43 03-01	NEEDLE BAR ROD SHAFT		415 47 55-01	ACCESSORY BOX WITHOUT ACCESS.
206	415 47 11-01	FRONT COVER HINGE		415 44 06-01	SCREWDRIVER
207	415 44 63-01	FRONT COVER GUIDE SHAFT		412 28 90-01	SCREWDRIVER SMALL
208	415 32 98-01	Stop ring		415 44 07-01	PINCETTE
209	415 32 96-01	Spring		415 30 13-01	MACHINE BRUSH
				415 44 10-01	SPOOL CAP
210	415 44 68-01	FRONT COVER HOOK		415 30 15-01	SPOOL NET
211	415 44 59-01	Screw		415 44 12-01	OILER
212	415 47 12-01	FRONT COVER ASSEMBLY (206-212)			
212.1	415 47 13-01	FRONT COVER			
212.2	415 47 14-01	BLADE COVER			
212.3	415 47 15-01	THREAD GUIDE CONTROL PLATE			
212.4	415 47 65-01	FRONT COVER PLATE			
213	415 34 33-01	Cushion A		415 47 60-01	BLIND STITCH PRESSER FOOT
214	415 44 02-01	Spacer		415 47 61-01	PEARL SEQUENCE PRESSER FOOT
215	415 45 06-01	Screw		415 47 62-01	PIPING PRESSER FOOT
				415 47 63-01	ELASTIC PRESSER FOOT
216	415 47 17-01	OIL PAN			
217	415 47 18-01	CONTROL FRONT COVER			
218	415 47 67-01	CONTROL COVER PLATE			
219	415 47 20-01	MATERIAL PL. COVER HINGE SHAFT			
220	415 47 21-01	MATERIAL PLATE COVER HINGE			
221	415 47 22-01	MATERIAL PLATE FRONT COVER		412 39 98-05	Operating manual SWE/FIN
222	415 47 23-01	MATERIAL PLATE COVER SPRING		412 39 98-15	Operating manual DAN/NOR
223	415 47 24-01	MATERIAL PLATE COVER B		412 39 98-25	Operating manual FRENCH/DUTCH
224	415 45 08-01	Screw		412 39 98-26	Operating manual ENGLISH
225	415 47 25-01	NEEDLE PLATE ASSEMBLY		412 39 98-35	Operating manual GER/ITA
226	415 30 37-01	Screw			
227	415 47 26-01	INNER COVER ASSEMBLY			
228	415 47 27-01	TAPPING SCREW			
229	415 44 21-01	Screw			
230	415 47 28-01	PANEL LOOPER THREAD GUIDE		415 48 65-01	Service gauge
231	415 47 29-01	OVERLOOPER THREAD GUIDE			
232	415 47 30-01	UNDERLOOPER THREAD GUIDE			
233	415 47 68-01	PANEL ASSEMBLY(230-232,240,277)			
234	415 47 69-01	LCD SWITCH			
235	415 47 70-01	KEY BASE ASSEMBLY			
236	415 47 32-01	TAKE-UP LEVER COVER			
237	415 47 71-01	TAPPING SCREW			
238	415 47 72-01	LCD BASE ASSEMBLY			
239	415 47 73-01	INSULATION SHEET			
240	415 47 33-01	NEEDLE THREAD GUIDE, LEFT			
241	415 47 34-01	NEEDLE THREAD GUIDE, RIGHT			
242	415 47 74-01	SWITCH KNOB			
243	415 47 75-01	SPEED CONTROL SWITCH ASSEMBLY			
244	415 47 76-01	SWITCH HOLDER			
245	415 41 73-01	SCREW			
246	415 47 77-01	SEW-LIGHT COVER ASSEMBLY			
247	415 43 65-01	HANDLE SHAFT			
248	415 47 36-01	HANDLE			
249	415 34 36-01	SPOOL STAND ASSEMBLY			
250	415 33 23-01	Spool pin			
251	415 30 17-01	SPOOL CUSHION			
252	415 34 37-01	SPOOL STAND BASE			

